

REDCLIFFE PLANTATION
181 REDCLIFFE RD
BEECH ISLAND, SC 29842
(803) 827-1473

Redcliffe Southern Times

VOLUME 12, ISSUE 1

JULY 2017

UPCOMING EVENTS
AT REDCLIFFE

Hunger Takes No
Vacation Food Drive

Now - Nov 30

Donate at all 47 SC
State Parks

Celestial Observations

Aug 17 - Aug 21

Attend Redcliffe House

Tours at 11, 1 & 3

\$7.50/Adults, \$5.00/SC

Seniors & Ages 6-16

In honor of the Aug 21
Eclipse!

For more information on
these programs please
contact the park.

Park Staff

Park Manager
Joy Raintree

Park Interpreter
Elizabeth Laney

Park Technician
Doug Kratz

Asst. Park Ranger
Theresa Hipps



Awkward Family Photos

The suns in my eyes! Stop hitting me. Sit still. Owww!!!
Look at the camera. Okay everyone....SMILE!!

We've all been there. The obligatory family portrait where babies won't stop crying, parents are hard pressed to keep their kids in one spot and at least one person is looking around at the all the madness and shaking their head. Sometimes that perfect family portrait is anything but perfect as you will see in these two historic portraits of the Hammond Family from Christmas 1910 (above) and the Billings family from the summer of 1908 (below).



Quote of the Month:

From a letter written by Harry Hammond of Kathwood to his cousin John Shaw Billings of Redcliffe about Billings' dog Lucky in August of 1953.

"Glad to hear Lucky has recovered. I don't like grapes either."

Dancing and Quarrelling.



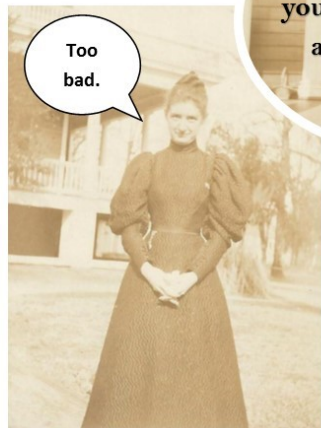
A Whipping Post.



What's the matter? Are you mad at me?



Too bad.



What are you smiling about?



A Talk About Cotton.

Hijinks on "The Hill" - This six picture series was found in Redcliffe Plantation's collection of historic photographs. The photos are numbered on the back and feature some interesting color text. The photos were taken at "The Hill," home of the Cumming family in Augusta, GA and feature Redcliffe's own Henry Cumming Hammond! We have reproduced the photos and original text here in the style of a comic. Enjoy!



2002

Preservation Note: Here we go again!

In 2002 we lost 1/4 of the ceiling in the 1st floor parlor to a plaster collapse. The nails holding up the century-old plaster had finally given way, leaving us with, well, a mess. The next few months were a flurry of resecuring ceilings with 3 inch stainless steel screws and washers, skim coating, repairing furniture, and having paintings cleaned.

So when the upstairs bedroom plaster began sagging, we knew what we were up against. Luckily, the sag was gradual and gave us time to plan without actually collapsing! Over the next year follow our progress as we begin to resecure the historic plaster on the 2nd floor of the historic mansion. We will be moving around quite a bit of furniture and kicking up a bit of dust.

The end result will be unnoticeable, just the way we like it!



2017